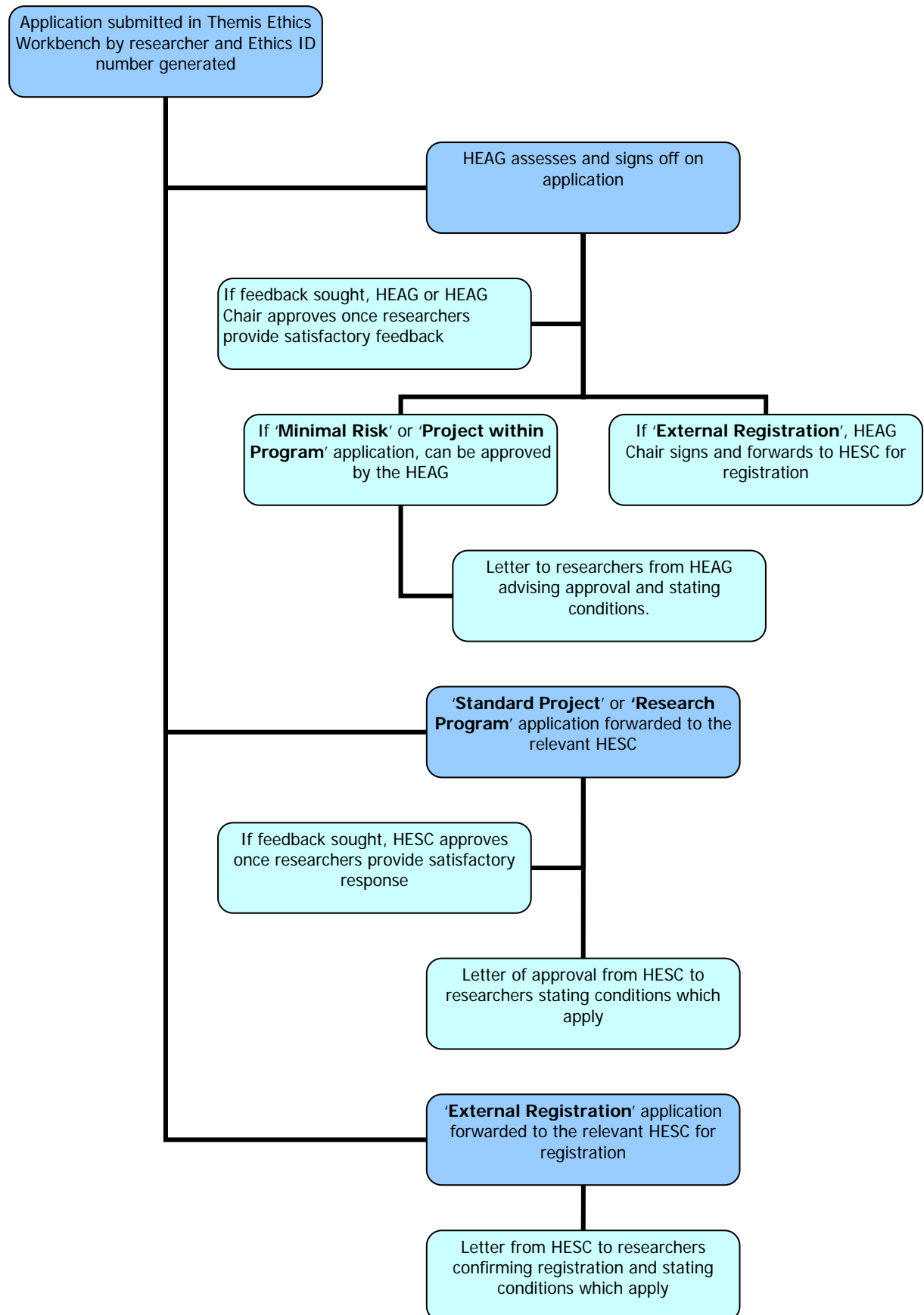


## HUMAN ETHICS APPROVAL PROCESS



**Note:** Researchers must follow the procedures outlined on the Psychiatry Ethics website when submitting an application: <http://www.psychiatry.unimelb.edu.au/admin/ethics/procedures.htm>

All applications must be signed by the HEAG Chair (or delegate) and the Head of Department (or delegate). This will be arranged by the HEAG Administrator.